



# 65<sup>th</sup> Safari Rally 2017



## MEDIA GUIDE

**ARC/KNRC Round 2  
17th-18th March.**



Anwar Sidi Photography 2017





## The 2017 Safari Rally. 17<sup>th</sup> & 18<sup>th</sup> March. ARC /KNRC Round 2

The 2017 Safari Rally , the second round of the FIA African Rally Championship for 2017 will be run on the 17th and 18th of March 2017 .

With a bumper entry of over 15 ARC Registered crews and a further 30 National local crews , the event promises to be one of the more successful events of the year.

Running through 4 Counties and over 400 kms , Kenya is indeed well placed to stamp its mark of authority on the Continent's premier Championship.

Nine diverse and challenging stages ranging in altitude from 4000 ft to over 8000 ft , traversing the Great Rift Valley and forests , this years Safari Rally will put a premium on the endurance and resilience of the cars and drivers competing for the ultimate glory of overcoming the Worlds Toughest Rally.

The Organising Commitee and myself warmly welcome all of you to this years Safari Rally , and we urge you to enjoy every minute of your stay with us in Kenya and to sample the delights Kenya has to offer beyond our fantastic event.

Good luck and see you all at the Finish Ramp.

Gurvir Bhabra  
Clerk of Course  
FIA ARC Rd 2  
2017 Safari Rally





## **The 2017 Safari Rally. 17<sup>th</sup> & 18<sup>th</sup> March. ARC/KNRC Round**

### **SAFARI RALLY 2017 - 17th to 18th March**

After an absence of 3 years from the FIA African Rally Championship ,the Safari Rally will this year be hosting the best ARC contenders to an Event like no other , with testing and tiring stages chosen for their challenging nature set within the most competitive and demanding terrain that the Country has to offer.

With a regulated number of days and the total distance restrictions as per FIA ARC rules , coming up with a concentrated version of yesteryear events has been the most challenging task entrusted to a core group of organisers with a strict deadline to deliver a ' World ' class Safari Rally within 5 weeks.

As Safari traditions go , the start can only be at the KICC in Nairobi , in the central business district , at 8;00 am on the busiest day for traffic - Friday.

With spectators in mind - the inclusion of the Spectator Stage at the Jamhuri Park is non negotiable , how we'll get the Rally circus to Jamhuri is another dilemma.

Compacting a traditional 5 day Easter event into 2 days of mind numbing competition within the bounds of safety is the final ingredient.

Competitor and spectator Safety during Rallies is an FIA ARC priority , and to that end , non traditional stages have been chosen , on private Ranches and Farms where all non competing traffic can be controlled and safely provided with viewing points .

Combining the prerequisites and the many many hours deliberating the options while clocking the few hundred kilometers traversing our gloriously traffic clogged roads - the Organising Team has put together an Event that will definitely leave a mark and set a benchmark for a modern day Safari Rally.

### **FRIDAY 17<sup>th</sup> March**

On Friday the 17th of March 2017 at 8am , the first competitor will be flagged off from under the watchful gaze of Mzee Jomo Kenyatta's statue and head to the first spectator stage at the Jamhuri Park. The 2 km of side by side racing will no doubt set the temperament for the coming days and the coming battles.

### **NGONG**

Cars will then meander and manoeuvre their way through the busy Ngong road to Ngong town and beyond.

The last time this section saw Rally action was way back in the eighties and many a Friday morning school attendance will suffer the visitation. Dropping from 5800 ft to about 4500 ft in 28 km will see drivers at the first proper Safari Stage of the day. With dust clouds , ruts and devious rocks ,sprinkled along the 16 km stage the Rift Valley will welcome the brave to the essence of the Safari Rally : reliability , tenacity , heat tolerance and a cool temperament .

### **SUSWA**

The next stage - a whole 25 km of technically demanding roads will then see the cars into a welcome service park , where man and machine can be rejuvenated to endure more punishment and indeed more fun.

### **KEDONG**

The foot of the now extinct Mt Longonot will see the cars start into the third stage of the day. As the cars drop further into the Great Rift Valley , and further into the event , drivers and navigators will no doubt find a rhythm and purpose to their Safari adventure and possibly start enjoying the competition.

Kedong Ranch may just shake up that misplaced sense of comfort.

Twisting through Lava strewn fields and tramline ruts , with the odd errant Zebra as witness , drivers will need an added degree of concentration and sensibility to preserve their already hot tyres from visiting some nasty , sharp obsidians that never take prisoners.

With the current crop of homogeneously technically superior cars with all the bells and whistles , a single puncture can dramatically ruin ones day and overall placing.

But then , this is Africa and this is the Safari Rally.

### **BUFFALO MALL**

After what may well be a confidence shattering stage through the Kedong Ranch , the Rally will proceed towards Naivasha , a brief Refuel stop at the Buffalo Mall and onwards to the Aberdare Hills Stage.

### **ABERDARE HILLS GOLF RESORT**

The 19 km stage on the Aberdare Hills Golf Resort will truly be a test of navigator prowess and driver responsiveness.

Twists , turns , deceptive brows and narrow roads with ancient boulders as spectators will demand 100% concentration. Being a relatively fast stage and the last competitive section of the day , there is a chance for the brave to either extend a lead or reduce a time difference favourably before bedding down for the night after a welcome service at the Buffalo Mall in Naivasha.

### **SATURDAY 18TH MARCH 2017.**

At an hour when normal people are contemplating God and his Divine goodness for our planet , Rally drivers will be lining up their machines for the start of the second day of racing and contemplating how to snatch a position or two and keep the machinery from letting the side down. A repeat of the Aberdare Hills stage - albeit in the cold early morning haze of the hills will then see the Rally head towards Soysambu

## **ELEMENTAITA**

The 50 km of intense racing over farm roads and tracks , and terrain familiarity may lend well to stamping a formidable position on the results table. Unfortunately , familiarity sometimes leads to arrogance .

The Safari Rally is really not one to forgive arrogance. The Conservancy will possibly establish the Rally standings going forward , but mechanical weaknesses from fatigued metals and composites may come to spring some surprises as the cars head to the newest Rally Stage in Kenya .

## **NDUNDORI**

The Bahati and Ndundori Forest , a protectively manage resource of our Country will for the first time play host to the man and machine battle unfolding over the past competitive 150 kms by essentially fanning the egos of leaders and bandaging disappointments .

Newly graded roads , cooling high altitude air and forest Racing at over 8000 feet above sea level will set the tone both in attitude and goal achieving as the drivers tackle the penultimate stage of the 64th Safari Rally.

Flat narrow straights , sweeping brows , deceptive hairpins , rich red dust and the reverberating echoes of modern engines through the tunnels created by overhanging tree branches all paint a perfect picture of motorsport romance - for spectators that is.

The 25 km Forest Stage may just be the most technically demanding run of the entire event. Combine mechanical fatigue with human fatigue and the inevitable lapse in concentration - not a kind thought. With the Finish now in sight , a sensible and calculated run up and down the Forest will definitely pay dividends towards the ultimate goal of conquering the Safari Rally.

## **GICHEHA**

A 53 km transport section then takes the cars to Gicheha Farm , in the Rongai area - a stage where the Podium positions are going to be established.

The 24 km Gicheha Farm stage is the run that will decide the results - flat line , twisty , smooth and super competitive roads in a closed stage environment will mean a full out attack from the word go. Throwing caution to the winds , pedal to the metal and a can do attitude despite any mechanical gremlins will be last chance for competitors to Finish the Safari with style , substance and pride.

A short transport section takes the Rally to the Albizia Service Park for some desperately needed R&R and finally a victory convoy to the Afraha Stadium in Nakuru for the Ceremonial Finish and prize giving.




After 9 competitive stages and a total travel of over 480 km over 2 days through 4 Counties - every Crew that makes it to Afraha will forever be remembered as conquerors of what is still the Worlds Toughest Rally , because , this is Africa and this was the Safari Rally.



## The 2017 Safari Rally. 17<sup>th</sup> & 18<sup>th</sup> March. ARC /KNRC Round 2




### GPS CORDINATES

Description	Distance	GPS Cordinates	Elevation
START KICC		01° 17'20.6"S 36° 49.22.78'E	1591
<b>JAMHURI PARK</b>	<b>2KM</b>	<b>S1° 18.646' E36° 45.640'</b>	<b>1805</b>
<b>CS2 NGONG START</b>	<b>16.85KM</b>	<b>S1° 21.447' E36° 35.796'</b>	<b>1791</b>
<b>CE2 END</b>		<b>S1° 14.793' E36° 33.001'</b>	<b>1829</b>
ER1 (Escape Route) Cs2		S1° 21.497' E36° 35.963'	1792
ER2 (Escape Route) Cs2		S1° 20.355' E36° 34.024'	1759
<b>CS3 SUSWA START</b>	<b>24.45KM</b>	<b>S1° 13.222' E36° 32.654'</b>	<b>1652</b>
<b>CE 3 END</b>		<b>S1° 04.153' E36° 25.064'</b>	<b>1583</b>
ER3 (Escape Route) Cs2		S1° 04.543' E36° 26.022'	1574
SUSWA SERVICE PARK		S1° 02.704' E36° 21.781'	1614
<b>CS4 KEDONG START</b>	<b>21.92KM</b>	<b>S0° 53.056' E36° 28.597'</b>	<b>2123</b>
<b>CE4 END</b>		<b>S0° 49.429' E36° 23.581'</b>	<b>1935</b>
ER4 (Escape Route) Cs3		S0° 48.854' E36° 24.401'	1939
<b>CS5 &amp;6 ABERDARES HILLS</b>	<b>18.83KM</b>	<b>S0° 38.745' E36° 26.022'</b>	<b>1978</b>
<b>CE5 &amp; 6 END</b>		<b>S0° 38.443' E36° 25.543'</b>	<b>1958</b>
BUFFALLO MALL		S0° 42.197' E36° 25.740'	1913
<b>CS7 ELEMENTAITA START</b>	<b>49.98KM</b>	<b>S0° 28.872' E36° 14.436'</b>	<b>1808</b>
<b>CE7 END</b>		<b>S0° 22.521' E36° 09.618'</b>	<b>1867</b>
ER5 (Escape Route) Cs7		S0° 28.504' E36° 13.537'	1806
ER6 (Escape Route) Cs7		S0° 28.593' E36° 10.663'	1852
ER7 (Escape Route) Cs7		S0° 25.959' E36° 09.389'	1846
ER8 (Escape Route) Cs7		S0° 23.588' E36° 13.469'	1801
<b>CS8 NDUNDORI START</b>	<b>25.28KM</b>	<b>S0° 15.475' E36° 13.626'</b>	<b>2299</b>
<b>CE8 END</b>		<b>S0° 05.464' E36° 11.377'</b>	<b>2384</b>
ER10 (Escape Route) Cs8		S0° 09.360' E36° 11.550'	2306
ER11 (Escape Route) Cs8		S0° 07.084' E36° 11.818'	2382
LANET SERVICE PARK		S0° 17.398' E36° 09.246'	1913
<b>CS9 GICHEHA START</b>	<b>23.95KM</b>	<b>S0° 12.642' E35° 55.855'</b>	<b>1971</b>
<b>CE9 END</b>		<b>S0° 13.563' E35° 54.599'</b>	<b>1979</b>
ALIBIZIA SERVICE PARK		S0° 14.067' E35° 57.178'	2043
AFRAHA STADIUM		S0° 17.667' E36° 04.415'	1819
HQ BUFFALO MALL		S0° 42.140' E36° 25.827'	1918
SCRUTINEERING GALLERIA MALL		S1 20.598 E36 45.952	
KMSF,FOREST ROAD		S1 16.056 E36 49.787	
RZ01 JAMHURI		1° 18'39.16"S 36° 45'22.27"E	
RZ02 SUSWA		S1° 02.704' E36° 21.781'	
RZ03 & RZ04 BUFFALO MALL		S0° 42.197' E36° 25.740'	
RZ05 ELEMENTAITA		S0° 29.035' E36° 16.218'	
RZ06 LANET		S0° 17.398' E36° 09.246'	
RZ07 MENENGAI		S0° 13.268' E35° 57.251'	

				<b>SAFARI RALLY 2017</b> <b>LEG 1 - FIRDAY 17th March</b>			
DRAFT ITINERARY @ 11/03/2017							
TC	LOCATION	COMP DIST. kms.	LIAISON DIST. kms.	TOTAL DIST. kms.	TARGET TIME Hr:Min	1st CAR E.T.A. Hr:Min	
FRIDAY 17 MARCH 2017							
0	START-KICC					08:00	
1A	HOLDING IN (JAMHURI)		25.86	25.86	00:55	08:55	
1B	HOLDING OUT (JAMHURI)					09:05	
1	JAMHURI		0.50	0.50	00:05	09:10	
CS 1	JAMHURI	2.00				09:13	
1C	HOLDING IN (JAMHURI)			0.50	00:05	09:18	
1D	HOLDING OUT (JAMHURI)					09:28	
RZ 01	REMOTE REFUEL - ALL COMPETITORS	-					
	DISTANCE TO NEXT REFUEL :	(41.30)	(38.65)	(79.95)			
2	NGONG		28.65	28.65	00:50	10:18	
CS 2	NGONG	16.85				10:21	
3	SUSWA		3.50	20.35	00:25	10:46	
CS 3	SUSWA	24.45				10:49	
3A	SERVICE A IN		6.50	30.95	00:35	11:24	
SERVICE A (SUSWA SERVICE PARK)		43.30	65.01	108.31	30 min		
3B	SERVICE A OUT				00:30	11:54	
RZ 02	REFUEL - ALL COMPETITORS	-	-	-			
	DISTANCE TO NEXT REFUEL :	(21.92)	(44.78)	(66.70)			
4	KEDONG		44.78	44.78	00:55	12:49	
CS 4	KEDONG	21.92				12:52	
RZ 03	BUFFALO MALL - ALL COMPETITORS	-					
	DISTANCE TO PARC FERME :	(18.83)	(34.97)	(53.80)			
5	ABERDARES HILLS 1		23.76	45.68	00:55	13:47	
CS 5	ABERDARES HILLS 1	18.83				13:50	
5A	SERVICE B IN		11.21	30.04	00:35	14:25	
FLEXI SERVICE B (BUFFALO MALL NAIVASHA)		40.75	79.75	120.50	45 Min		
5B	SERVICE B OUT				00:45	15:10	
RZ 04	BUFFALO MALL - ALL COMPETITORS	-					
	DISTANCE TO PARC FERME :	-	(1.00)	(1.00)			
5C	PARC FERME IN - BUFFALO MALL NAIVASHA		1.00	1.00	00:05	15:15	
LEG 1 FRIDAY TOTAL		84.05	145.76	229.81			
LEG 1 (SECTION 1,2)		84.05	145.76	229.81			
LEG 1 TOTALS		84.05	145.76	229.81			

SECTION 1

SECTION 2

				<b>SAFARI RALLY 2017</b> <b>LEG 2 - SATURDAY 18th March</b>				
<b>DRAFT ITINERARY @ 11/3/2017</b>								
TC	LOCATION	COMP DIST. kms.	LIAISON DIST. kms.	TOTAL DIST. kms.	TARGET TIME Hr:Min	1st CAR E.T.A. Hr:Min		
5D	PARC FERME OUT					06:00		
5E	SERVICE C IN		1.00	1.00	00:05	06:05		
SERVICE C (BUFFALO MALL)			1.00	1.00	15 Min			
5F	SERVICE C OUT				00:15	06:20		
6	ABERDARE HILLS 2		7.54	7.54	00:15	06:35		
CS 6	ABERDARE HILLS 2	18.83				06:38		
RZ 05	REMOTE REFUEL - ALL COMPETITORS		-					
	DISTANCE TO NEXT REFUEL : (SOYSAMBU)		(49.43)	(51.46)	(61.44)			
7	ELEMENTAITA		39.45	58.28	01:10	07:48		
CS 7	ELEMENTAITA	49.43				07:51		
7A	SERVICE D IN		12.01	61.44	01:05	08:56		
SERVICE D (LANET TO DUNDORI RD)			68.26	59.00	127.26	30 Min		
7B	SERVICE D OUT				00:30	09:26		
RZ 06	REFUEL - ALL COMPETITORS							
	DISTANCE TO NEXT REFUEL :		(25.28)	(10.85)	(36.13)			
8	NDUNDORI		10.85	10.85	00:20	09:46		
CS 8	NDUNDORI	25.28				09:49		
RZ 07	REMOTE REFUEL - ALL COMPETITORS		-					
	DISTANCE TO NEXT REFUEL : (GICHEHA)		(23.95)	(61.37)	(85.32)			
9	GICHEHA FARM		53.91	79.19	01:30	11:19		
CS 9	GICHEHA FARM	23.95				11:22		
9A	SERVICE E IN		7.46	31.41	00:35	11:57		
SERVICE E END OF DAY (ALBIZIA)			49.23	72.22	121.45	10 Min		
9B	SERVICE E OUT				00:10	12:07		
9C	PARC FERME IN		0.20	0.20	00:05	12:12		
9D	PARC FERME OUT					15:30		
9E	AFRAH STADIUM - FINISH		18.56	18.76	00:30	16:00		
LEG 2 SATURDAY TOTAL		117.49	151.18	268.67				

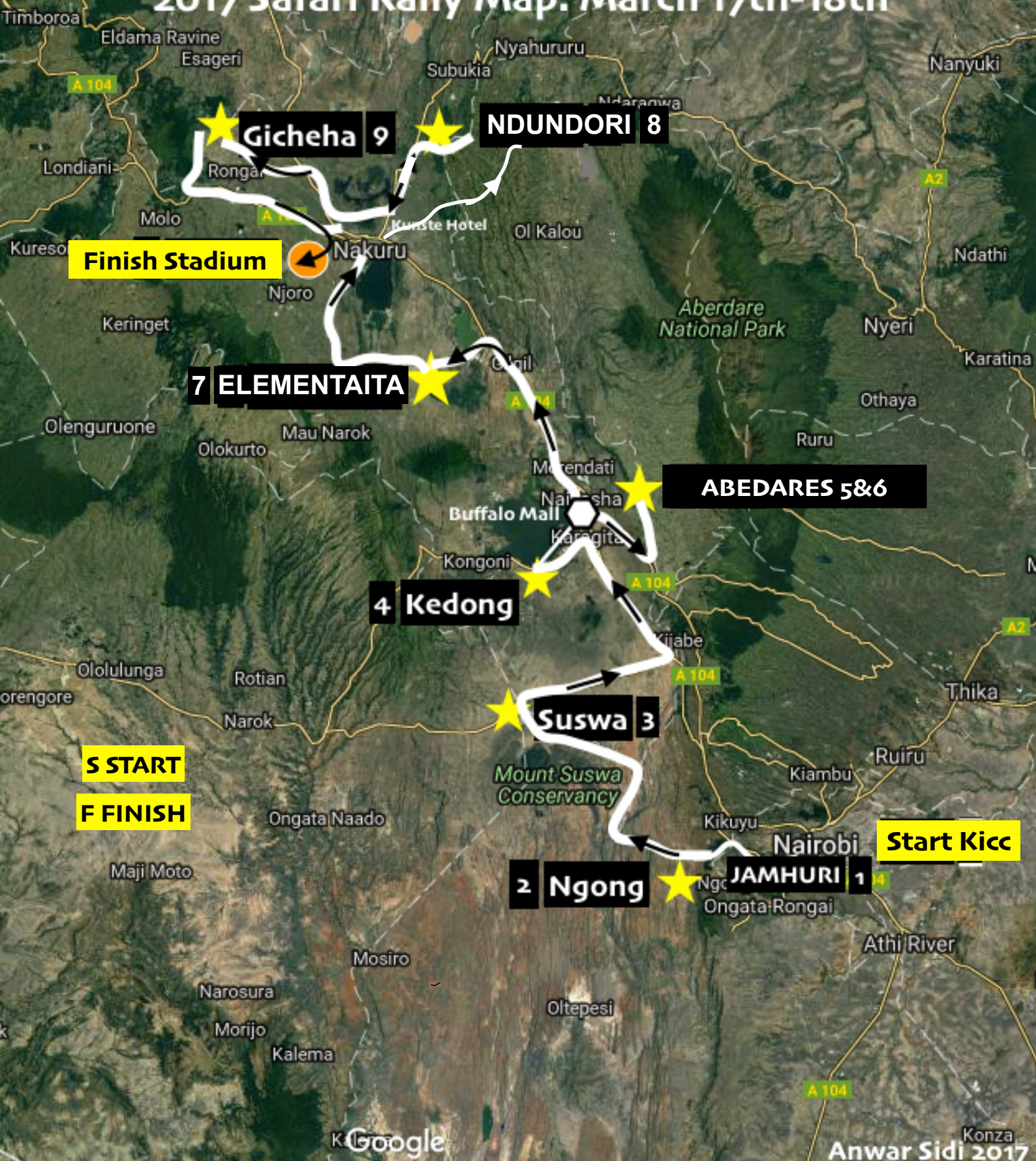
BY QAYYUM SHIRAZ

TOTALS OF THE RALLY					
		SS	LIAISON	TOTAL	%
17-Mar-17	SECTION 1,2	84.05	145.76	229.81	36.57%
18-Mar-17	SECTION 3,4	117.49	151.18	268.67	43.73%
<b>TOTAL 9 SS</b>		<b>201.54</b>	<b>296.94</b>	<b>498.48</b>	<b>40.43%</b>

**MAXIMUM PERMITTED LATENESS:**

- 1) Any lateness exceeding 15 minutes on any individual target time or an accumulative lateness exceeding 30 minutes at the end of each section.
- 2) Early arrival shall under no circumstances permit crews to reduce the lateness.

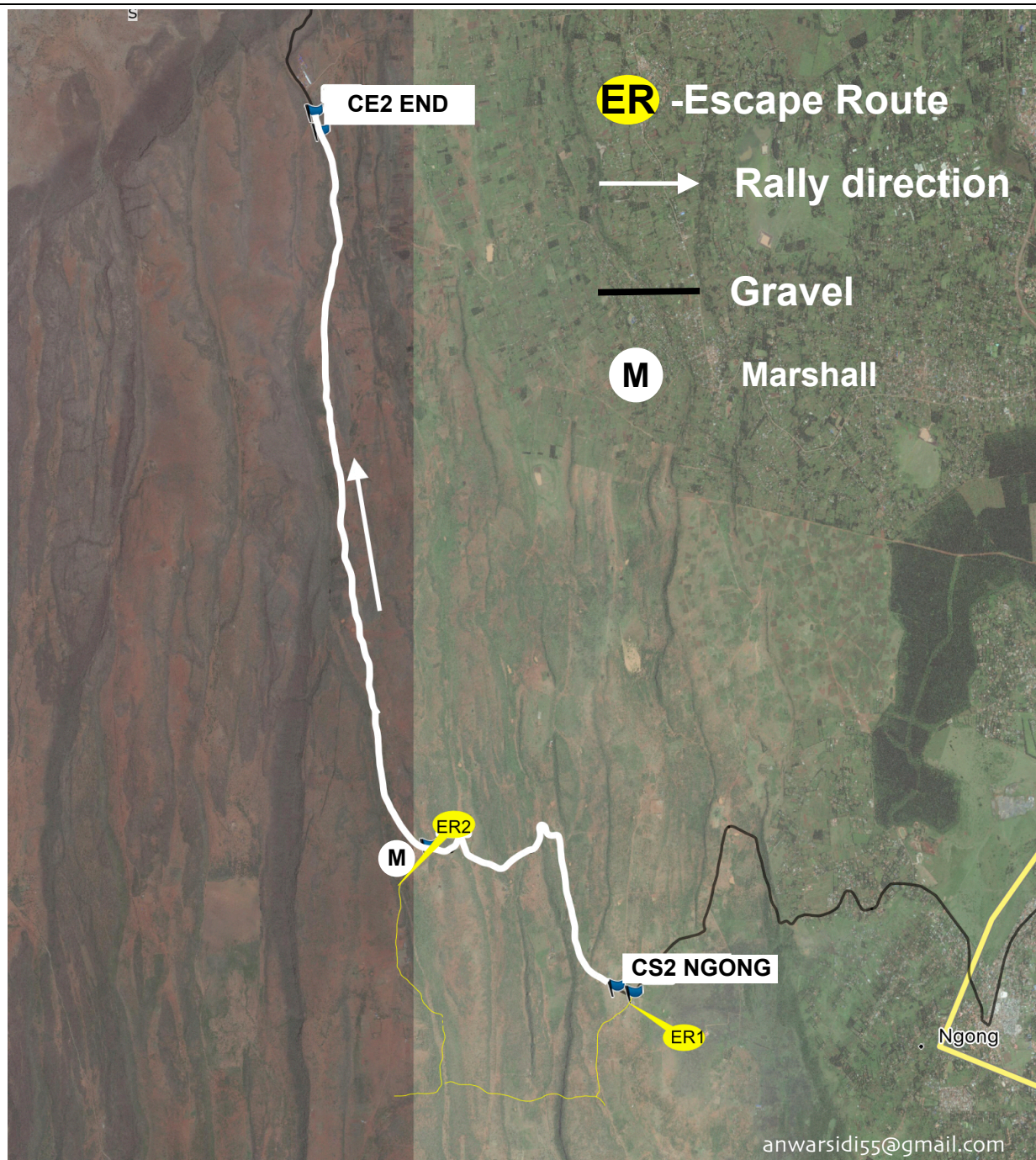
# 2017 Safari Rally Map. March 17th-18th





## The 2017 Safari Rally. 17<sup>th</sup> & 18<sup>th</sup> March. ARC/KNRC Round

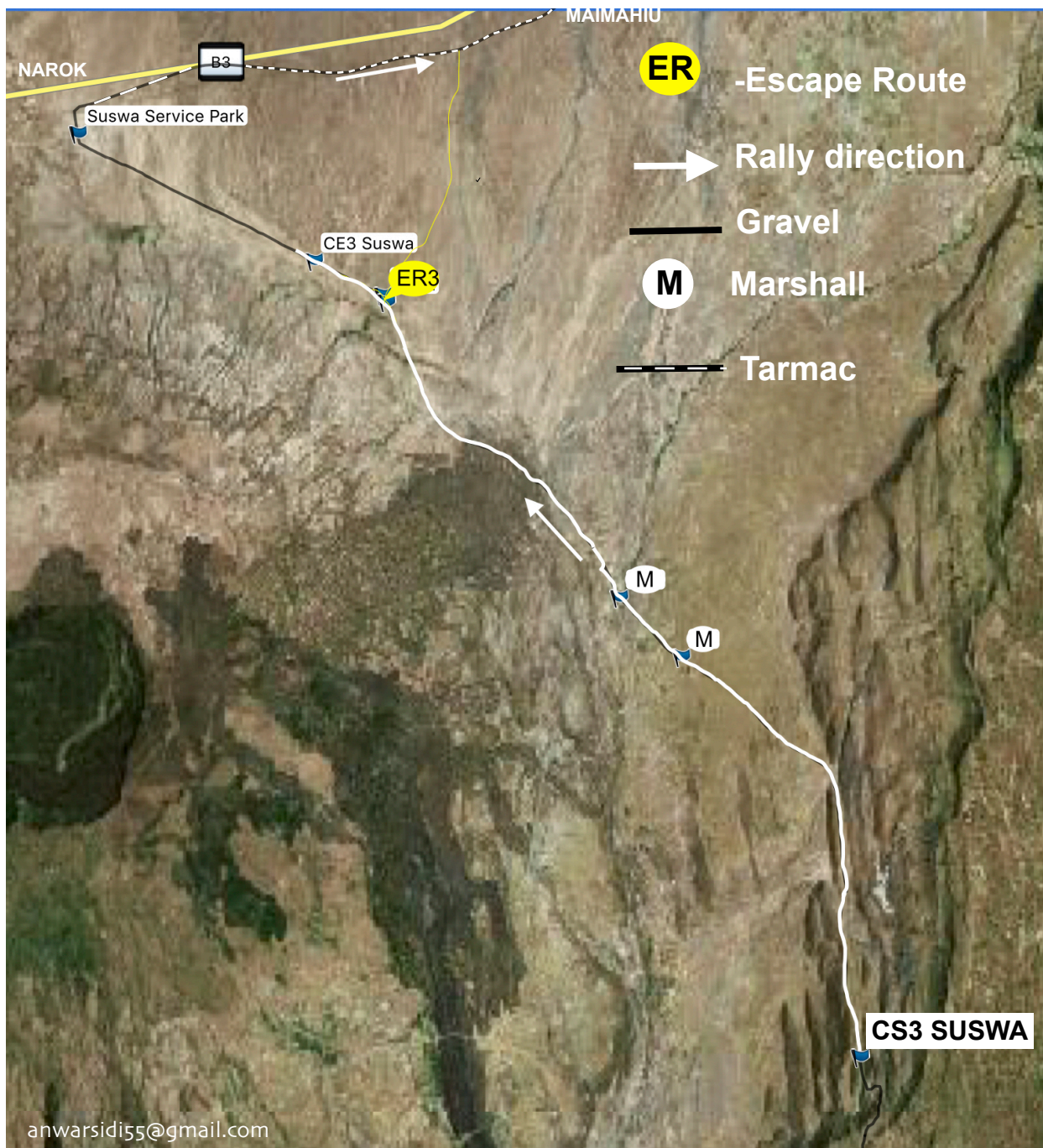
<b>CS2   NGONG</b>	<b>GPS START: S1° 21.447' E36° 35.796'</b>
<b>DISTANCE: 16.85km</b>	<b>GPS END: S1° 14.793' E36° 33.001'</b>
<b>ER1: S1° 21.497' E36° 35.963'</b>	
<b>ER2: S1° 20.355' E36° 34.024'</b>	





## The 2017 Safari Rally. 17<sup>th</sup> & 18<sup>th</sup> March. ARC/KNRC Round

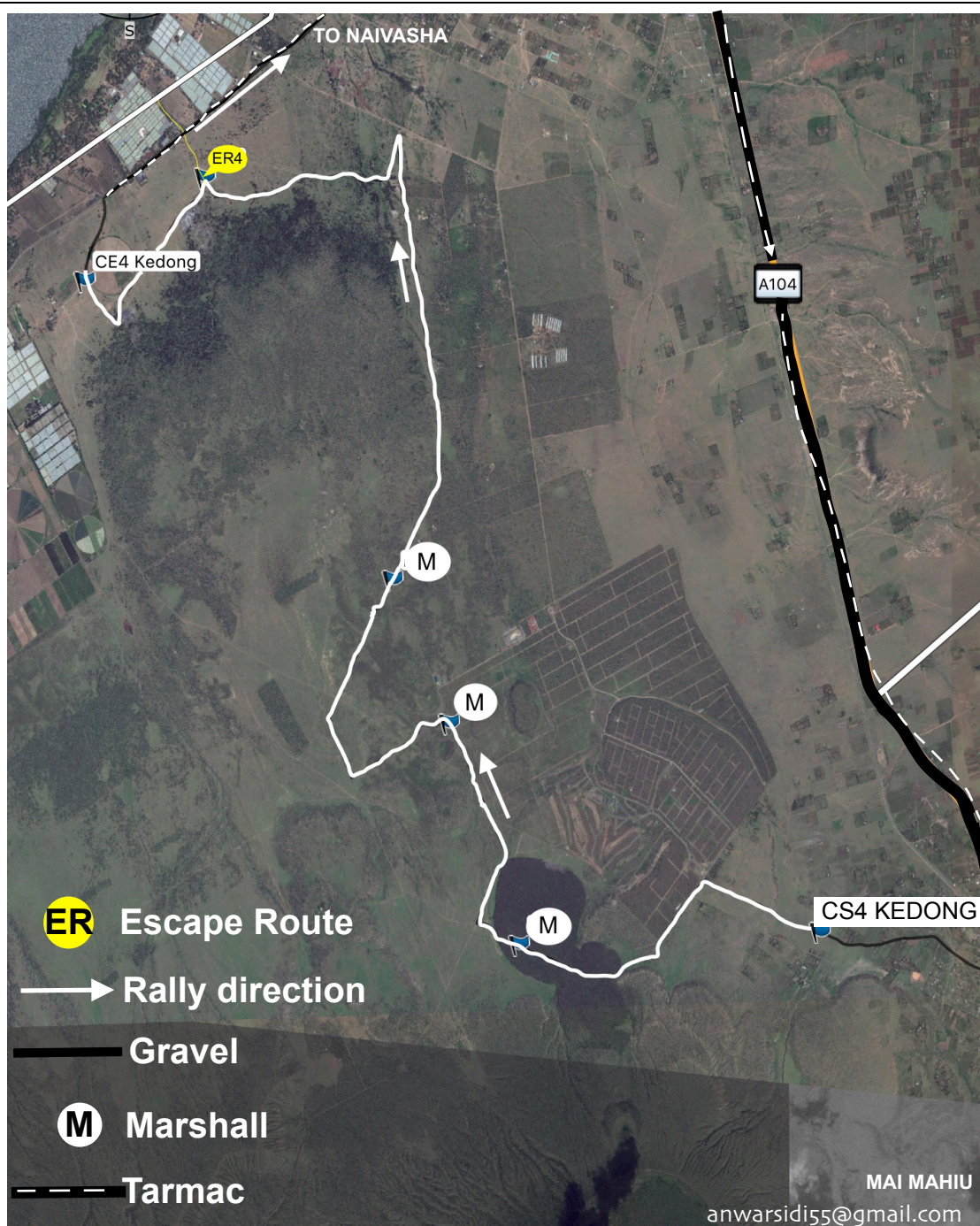
<b>CS3 SUSWA</b>	<b>GPS START: S1° 13.222' E36° 32.654'</b>
<b>DISTANCE: 24.45KM</b>	<b>GPS END: S1° 04.153' E36° 25.064'</b>
<b>ER3: S1° 04.543' E36° 26.022'</b>	





## The 2017 Safari Rally. 17<sup>th</sup> & 18<sup>th</sup> March. ARC/KNRC Round

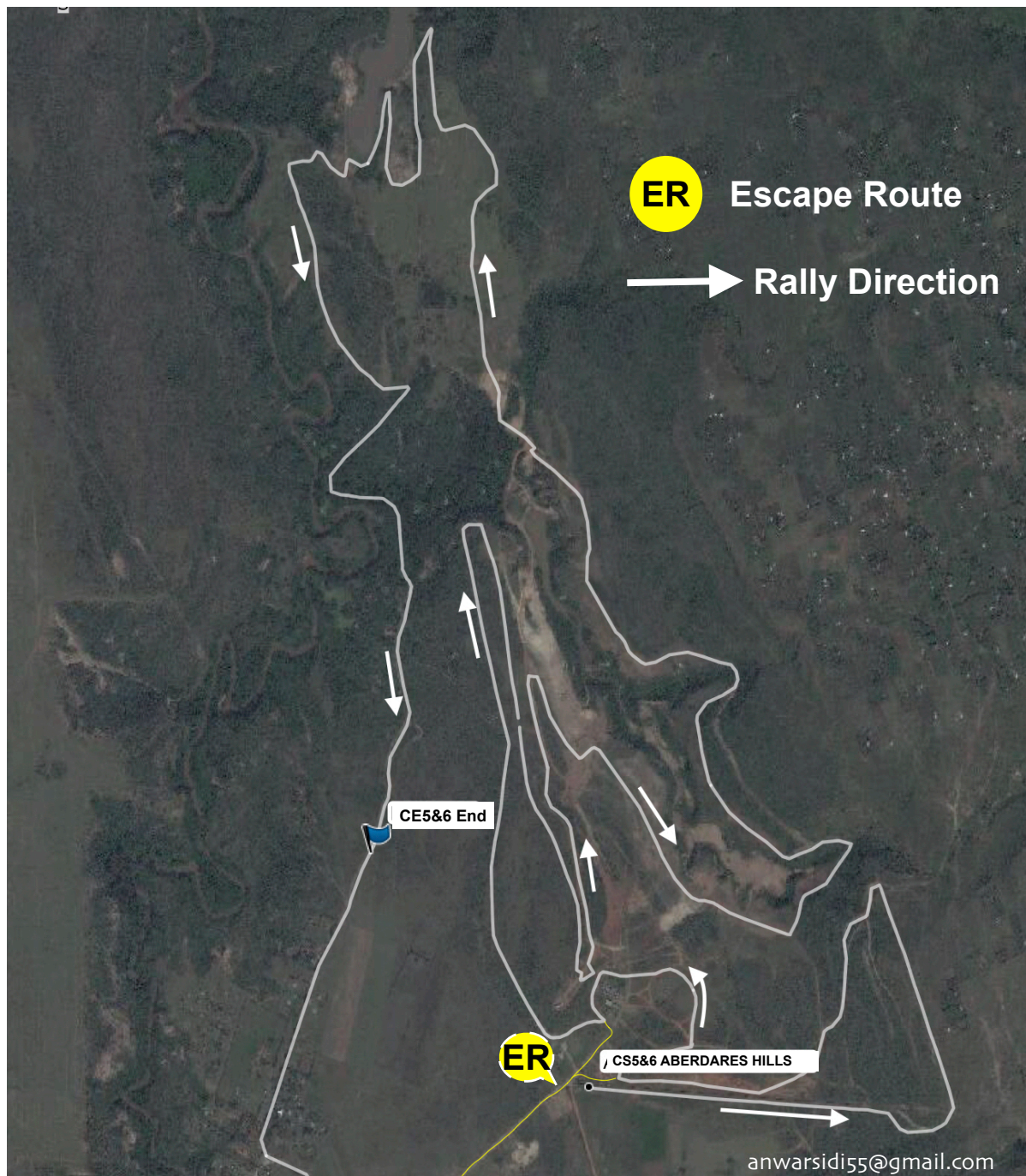
<b>CS4 KEDONG</b>	<b>GPS START: S0° 53.056' E36° 28.597'</b>
<b>DISTANCE: 21.92km</b>	<b>GPS END: S0° 49.429' E36° 23.581'</b>
<b>ER4: S0° 48.854' E36° 24.401'</b>	<b>Text</b>





## The 2017 Safari Rally. 17<sup>th</sup> & 18<sup>th</sup> March. ARC/KNRC Round

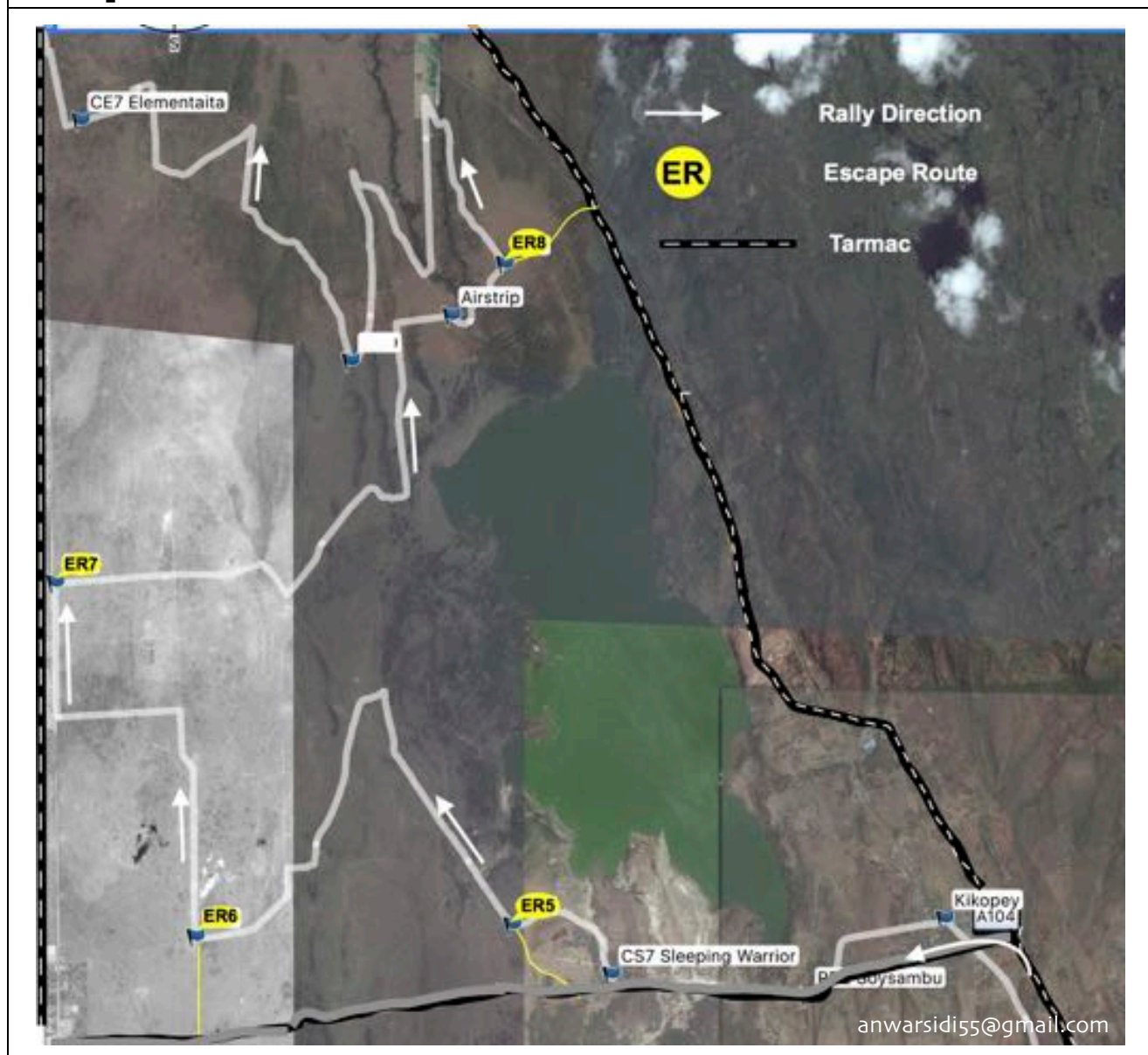
<b>CS5/6: ABERDARES HILLS</b>	<b>GPS START:</b> S0° 38.745' E36° 26.022'
<b>DISTANCE: 18.83KM</b>	<b>GPS END:</b> S0° 38.443' E36° 25.543'





## The 2017 Safari Rally. 17<sup>th</sup> & 18<sup>th</sup> March. ARC/KNRC Round

<b>CS7 Elementaita</b>	<b>GPS START: S0° 28.872' E36° 14.436'</b>
<b>DISTANCE: 49.98km</b>	<b>GPS END : S0° 22.521' E36° 09.618'</b>
<b>ER5: ER5: S0° 28.504' E36° 13.537'</b>	
<b>ER6: ER6: S0° 28.593' E36° 10.663'</b>	
<b>ER7: S0° 25.959' E36° 09.389'</b>	
<b>ER8: S0° 23.588' E36° 13.469'</b>	
<b>Helipad Elementaita: S0° 28.268' E36° 11.502'</b>	
<b>Helipad Elementaita: S0° 25.338' E36° 12.128'</b>	
<b>Airstrip Elementaita: S0° 23.973' E36° 12.984'</b>	





## The 2017 Safari Rally. 17<sup>th</sup> & 18<sup>th</sup> March. ARC/KNRC Round

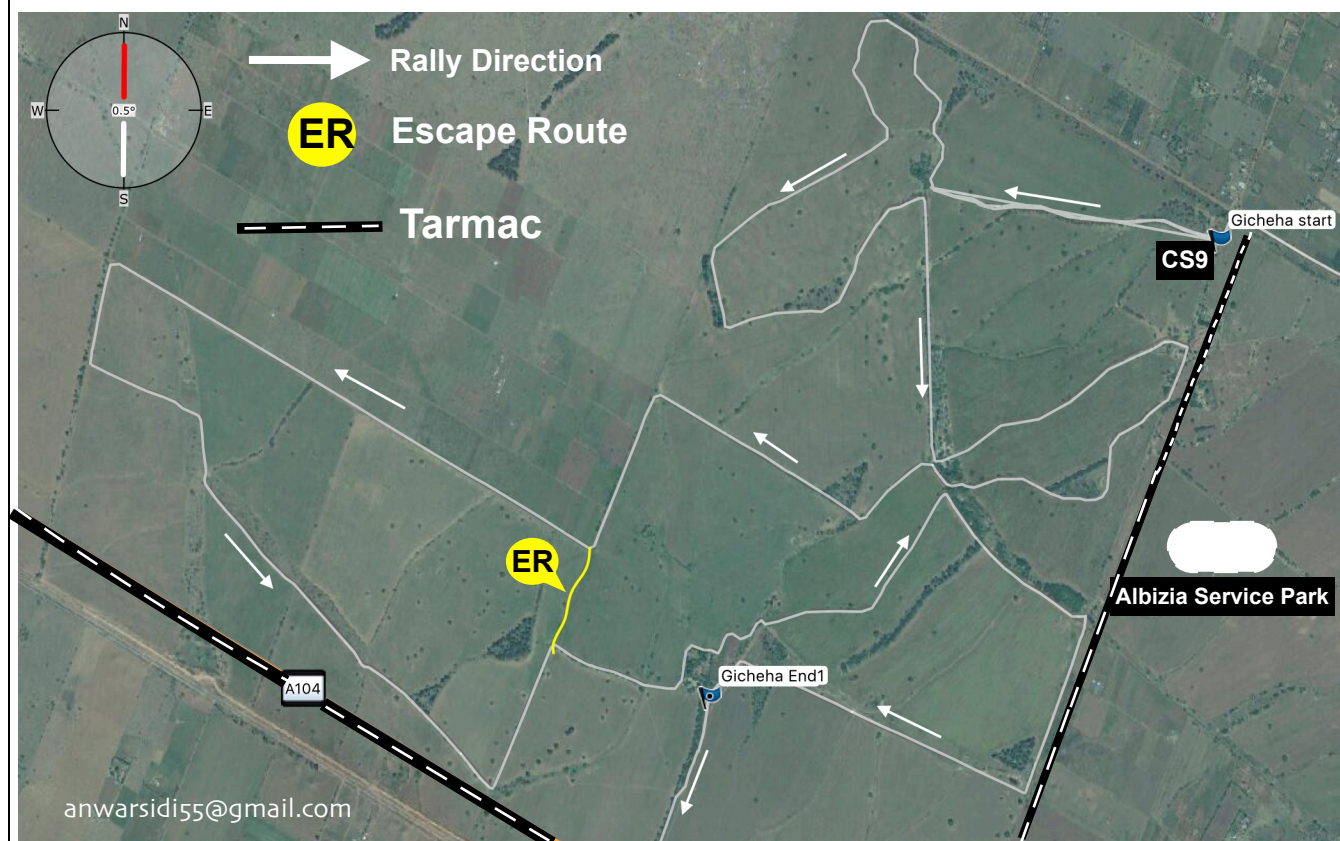
<b>CS8: NDUNDORI</b>	<b>GPS START: S0° 15.475' E36° 13.626'</b>
<b>DISTANCE: 25.28KM</b>	<b>GPS END : S0° 05.464' E36° 11.377'</b>
<b>ER10 S0° 09.360' E36° 11.550'</b>	
<b>ER11: S0° 07.084' E36° 11.818'</b>	





## The 2017 Safari Rally. 17<sup>th</sup> & 18<sup>th</sup> March. ARC/KNRC Round

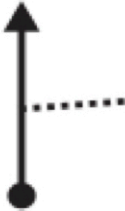
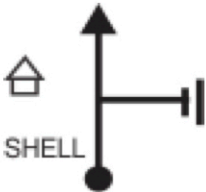

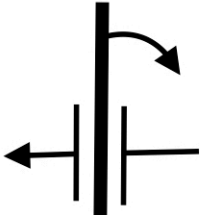
<b>CS9 NDUNDORI</b>	<b>GPS START: S0° 12.642' E35° 55.855'</b>
<b>DISTANCE: 23.95KM</b>	<b>GPS END: S0° 13.563' E35° 54.599'</b>
<b>ER10 S0° 09.360' E36° 11.550'</b>	
<b>ER11: S0° 07.084' E36° 11.818'</b>	



The 50 km of intense racing over farm roads and tracks , and terrain familiarity may lend well to stamping a formidable position on the results table. The Conservancy will possibly establish the Rally standings going forward , but mechanical weaknesses from fatigued metals and composites may come to spring some surprises as the cars head to the newest Rally Stage in Kenya .

Spectator View Point

From Gilgil Weigh Bridge  
to Soysambu Gate

0.00		! WEIGH BRIDGE
07.15		\$O GILGIL
03.25		\$O GILGIL ! BUMPS + PEOPLE
04.20		\$O KIPOKEY
11.97		Caution! Turn Right SOYSAMBU CONSERVENCY



## The 2017 Safari Rally. 17<sup>th</sup> & 18<sup>th</sup> March. ARC/KNRC Round

CS7 ELEMENTAITA.

### Spectator View Point

The 50 km of intense racing over farm roads and tracks , and terrain familiarity may lend well to stamping a formidable position on the results table.

The Safari Rally is really not one to forgive arrogance. The Conservancy will possibly establish the Rally standings going forward , but mechanical weaknesses from fatigued metals and composites may come to spring some surprises as the cars head to the newest Rally Stage in Kenya .



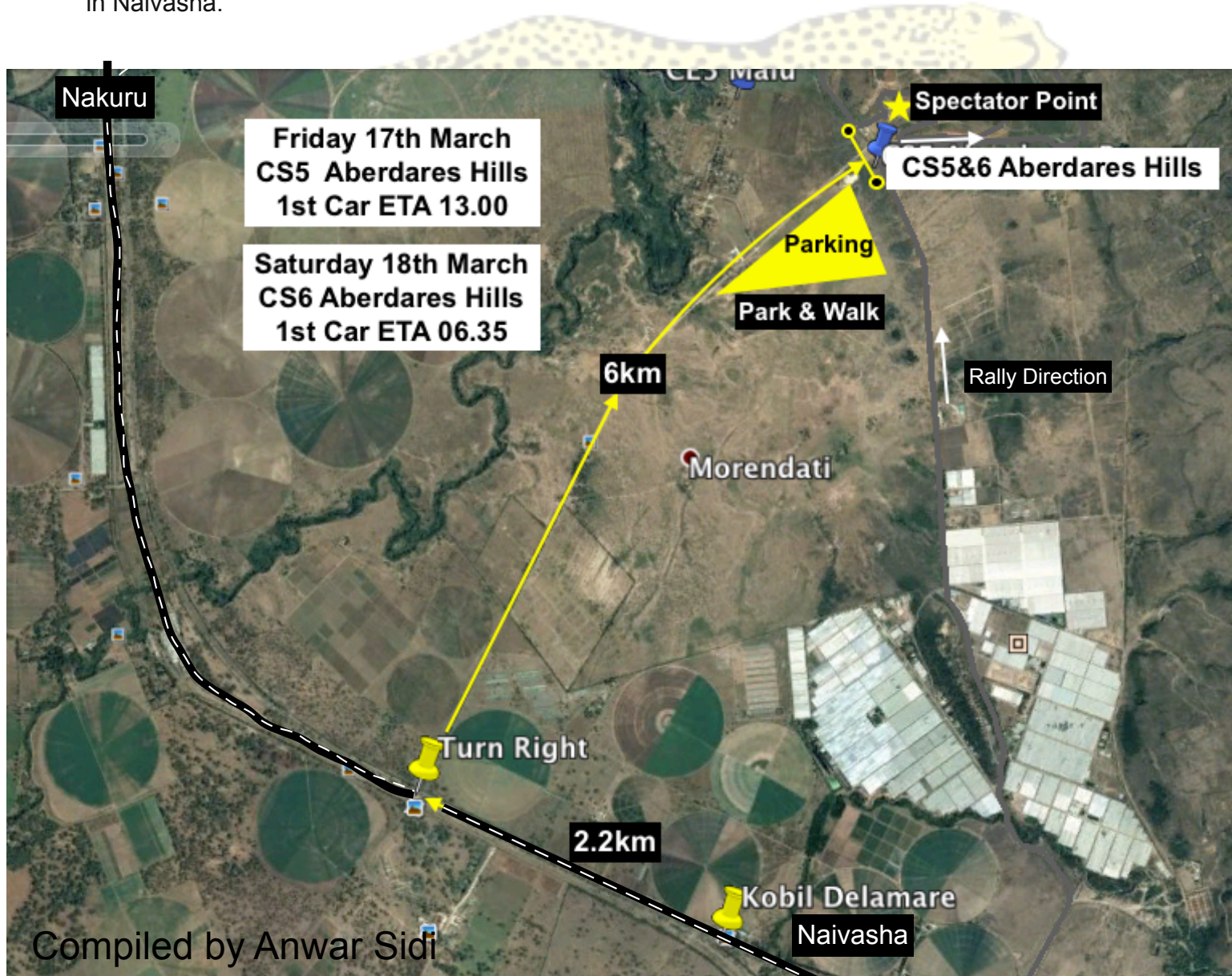


## The 2017 Safari Rally. 17<sup>th</sup> & 18<sup>th</sup> March. ARC/KNRC Round

### CS5&6 ABERDARE HILLS GOLF RESORT

### Spectator View Point

The 19 km stage on the Aberdare Hills Golf Resort will truly be a test of navigator prowess and driver responsiveness. Twists , turns , deceptive brows and narrow roads with ancient boulders as spectators will demand 100% concentration. Being a relatively fast stage and the last competitive section of the day , there is a chance for the brave to either extend a lead or reduce a time difference favourably before bedding down for the night after a welcome service at the Buffalo Mall in Naivasha.





**SAFARI RALLY 2017**  
**17th - 18th March**  
 KNRC Round 2



**ENTRY LIST @10/03/2017**

	Door No	DRIVER NAVIGATOR	ARC	DIV	ASN	CAR MAKE	GROUP	TEAM
1	1	Tapio Laukkanen Gavin Laurence		P	KEN KEN	Subaru Impreza GVB0046076	RC2-R4	Multiple Racing Team
2	68	Don Smith Bob Kaugi	✓	1	KEN KEN	Subaru Impreza N14	RC2-N4	Fly SAX
3	4	Jaspreet Chatthe Gurdeep Panesar	✓	P	KEN KEN	Mitsubishi Evolution 10	RC2-R4	Team Kibos
4	202	Jassy Singh Sajid Khan	✓	-	ZMB ZMB	Subaru Impreza N14	RC2-N4	Dirtstar Racing Team
5	209	Mohamed Roshanali Jean Jean	✓	-	TZA RWA	Subaru Impreza N10	RC2-N4	
6	203	Muna Singh Jnr Zunaid Khan	✓	-	ZMB ZMB	Subaru Impreza N14	RC2-N4	Dirtstar Racing Team
7	212	Valery Bukera Nital Khetia	✓	-	BDI BDI	Subaru Impreza N12	RC2-N4	
8	6	Manvir Baryan Drew Sturrock	✓	P	KEN GBR	Skoda Fabia	RC2-R5	Multiple Racing Team
9	207	Jas Mangat Joseph Kamya	✓	-	UGA UGA	Mitsubishi Evolution 10	RC2-R4	Jas Mangat
10	206	Christakis Fitidis Eric Nzamwita	✓	-	UGA RWN	Mitsubishi Evolution 10	RC2-N4	Fitidis Rally Team
11	5	Ian Duncan Amaar Slatch		P	KEN KEN	Mitsubishi Evolution 10	RC2-N4	Liquid Telecom
12	200	Duncan Mubiru George Semakula	✓	-	UGA UGA	Mitsubishi Evolution 10	RC2-N4	
13	204	Leroy Gomes Urshilla Gomes	✓	-	ZMB ZMB	Mitsubishi Evolution 10	RC2-N4	
14	3	Baldev Chager Ravi Soni		P	KEN KEN	Mitsubishi Evolution 10	RC2-R4	Kabras Sugar Racing
15	7	Carl Tundo Tim Jessop	✓	P	KEN KEN	Mitsubishi Evolution 10	RC2-N4	Top Fry Racing
16	205	Kleevan Gomes Eric Small	✓	-	ZMB ZMB	Mitsubishi Evolution 9	RC2-N4	
17	8	Onkar Rai Gareth Dawe		P	KEN KEN	Skoda Fabia	RC2-R5	Kabras Sugar Racing
18	211	Hassan Alwi Enoch Olinga	✓	-	UGA UGA	Subaru Impreza N14	RC2-N4	
19	63	Karan Patel James Mwangi		1	KEN KEN	Mitsubishi Evolution 10	RC2-N4	Filmico Racing
20	9	Quentin Mitchel Steve Cook		P	KEN KEN	Subaru Impreza N14	RC2-N4	QMR Racing
21	10	Amaanraj Rai Tauseef Khan		P	KEN KEN	Ford Fiesta	RC2-R5	Rai Racing
22	11	Tejveer Rai Zahir Shah		1	KEN KEN	Mitsubishi Evolution 10	RC2-R4	Kabras Sugar Racing



# SAFARI RALLY 2017

## 17th - 18th March

KNRC Round 2



### ENTRY LIST @10/03/2017

	Door No	DRIVER NAVIGATOR	ARC	DIV	ASN	CAR MAKE	GROUP	TEAM
23	14	Jasmeet Chana Ravi Chana		1	KEN KEN	Mitsubishi Evolution 10	RC2-N4	CRS Racing
24	17	Piero Cannobio Silvia Frigo		1	KEN KEN	Mitsubishi Evolution 10	RC2-N4	
25	16	Izhar Mirza Kavit Dave		1	KEN KEN	Mitsubishi Evolution 9	RC2-N4	Coast Pekee Racing
26	64	Raaji Bharij Rajay Sehmi		1	KEN KEN	Ford Escort MK1	CLASSIC	Rommy Bamrah
27	15	Farhaaz Khan Keith Henrie		1	KEN KEN	Mitsubishi Evolution 10	RC2-N4	Oilibya Racing
28	201	Geoff Bell Timothy Challen		-	ZAF KEN	Datsun 240Z	CLASSIC	Tams Racing
29	20	Mahesh Halai Ketan Halai		1	KEN KEN	Subaru Impreza N12	RC2-N4	
30	26	Jansher Sandhu Feisal Khan		1	KEN KEN	Mitsubishi Evolution 9	RC2-N4	Hai Racing
31	34	Natasha Tundo Chantal Young	✓	2	KEN KEN	Subaru Impreza N10	RC2-N4	
32	29	Jonathan Somen Richard Hechle	✓	1	KEN KEN	Ford Escort MK2	CLASSIC	Arrow Racing Team
33	31	Aakif Virani Azhar Bhatti		1	KEN KEN	Subaru Impreza N14	RC2-R4	Menengai Cream Boyz/Girl
34	32	Eric Bengi Tuta Mionki		2	KEN KEN	Subaru Impreza N10	RC2-N4	
35	208	Yasin Nasser Ali Katumba	✓	-	UGA UGA	Subaru GDB N10	RC2-N4	Logitac Rally Team
36	45	Ramesh Vishram Riyaz Ismail		2	KEN KEN	Ford Escort MK2	CLASSIC	
37	30	Osman Abdullahi George Mwangi		1	KEN KEN	Subaru Impreza N10	RC2-N4	Team A One Auto
38	46	Minesh Rathod TBA		2	KEN KEN	Mitsubishi Evolution 10	RC2-N4	
39	210	Kepher Walubi Susan Kalema		-	UGA UGA	Mitsubishi Evolution 10	RC2-N4	
40	65	Manmeet Puee Salim Khan		3	KEN KEN	Mitsubishi Evolution 10	RC2-N4	
41	67	Paras Pandya Falgun Bhojak		3	KEN KEN	Mitsubishi Evolution 10	RC2-N4	
42	107	Rommy Bamrah Jutley Harvey		3	KEN KEN	Datsun 240Z	CLASSIC	



**SAFARI RALLY 2017**  
**17th - 18th March**

KNRC Round 2



**ENTRY LIST @10/03/2017 - SPV/S/2WD**

	<b>Door No</b>	<b>DRIVER NAVIGATOR</b>	<b>ARC</b>	<b>DIV</b>	<b>ASN</b>	<b>CAR MAKE</b>	<b>GROUP</b>	<b>TEAM</b>
43	<b>19</b>	Asad Khan Harshil Limbani		1	KEN KEN	Subaru Impreza GC8	NAT-SPV	Shamba Boyz Motorsport
44	<b>66</b>	Sohanjeet Puee Gurveer Pandhal		3	KEN KEN	Subaru Impreza	NAT-S	Cementers Racing Team
45	<b>42</b>	Leonardo Varese Kigonde Kareithi		2	KEN KEN	Toyota Corolla RSI	NAT-2WD	Sports Pesa Rally Team
46	<b>54</b>	Daren Miranda Wayne Fernandes		3	KEN KEN	Subaru Imprezza GC3	NAT-2WD	Team A One Auto



## The 2017 Safari Rally. 17<sup>th</sup> & 18<sup>th</sup> March. ARC /KNRC Round 2

Shortest Safari Rally ever...  
By Abdul Sidi

## Press Release 1

This year's Safari Rally will be one of the shortest ever in the history of the famous event that was first run in 1953 as the Coronation Safari Rally.

The event, once considered as one of the leading rounds of the World Rally Championship before it lost its WRC status in 1992, will this year be 482 kilometers long of which 201 will be competitive distance divided into nine sections. The event was once almost 5800 kilometers long run over six days mostly over Easter Holidays.

Clerk of the Course, Gurvi Bhabra said the plans are well on schedule for the event returning to the African Rally Championship status after a gap of over two years.

"Our preparations are well on course considering this year's event is part of the ARC and what we do here will strongly decide on how Kenya makes its way back to the WRC. My personal opinion is that it's definitely an endurance event opposed to a sprint event," said Bhabra. Kenya has won the ARC title for the last two years on the trot with Jassi Chatthe/Gugu Panesar clinching it in 2015 and Don Smith/Bob Kaugi repeating the fate in 2016.

With the interest of winning the crown growing larger, more foreign drivers are expected to contest this year's Safari Rally, which has attracted over 51 entries.

According to Bhabra, spectators will have an option of choosing which stages to watch in next week's major round of the Kenya National Rally Championship. On Day One, they will have either Jamhuri Park or Aberdares Golf resort. For the final day, they can either remain at Aberdares Golf resort or move to Elementaita.

Day One, which will kick off at 8am from the Kenyatta International Conference Centre will head straight for the 1 km Spectator Stage at Jamhuri Park. Cars will then head for the rest of the Day One action through Ngong, Kedong, Suswa and Aberdares Hills before coming to for the overnight rest halt at the Buffalo Mall in Naivasha. Day Two action will resume at 6am on Saturday (18 March) from the Buffalo Mall before tackling four more stages through Aberdare Hills, Elementaita, Ndundori and Gichecha Farm.

Nakuru's Afrah Stadium will be the final Finish Point, where the first car will be expected at 4pm. The longest competitive stage will be 49 kms long while the shortest will be one kilometre.



The 2017 Safari Rally. 17<sup>th</sup> & 18<sup>th</sup> March. ARC /KNRC Round 2

ARC hits big number of registered drivers  
By Abdul Sidi

## Press Release 2

The 2017 African Rally Championship hits a new mark with the return of Kenya's round of the Safari Rally to the series this year.

Twenty-three drivers have entered the current series, making it as one with the highest number of competitors to have registered for the FIA-sanctioned Continental Championships.

Zambia's Muna Singh, the Member of FIA Rallies Commission and Coordinator for Africa, said he was excited about the high number of drivers in this year's round of the championship.

"I must say the return of the Safari Rally to the ARC circus has made a big difference in the contest this year. Majority of the foreign drivers love to do the event, considered as one of the best in Africa. For example both of my sons and their teams are prepared to contest the rally. Likewise there are other from other countries who will join the local drivers," said Singh while talking to Nation Sports Desk from Zambia.

The Safari Rally will be the second of the six-round series which kicked off poorly in Ivory Coast where only two ARC registered drivers took part though both failed at the last hurdle. The rally was won by a local crew of Soumahoro/Comas Romain in a Mitsubishi Lancer Evo10.

In the recent past, Kenya has won the ARC title twice for the last two years on the trot. Jassi Chatthe/Gugu Panesar clinched the title in 2015 while Don Smith/Bob Kaugi accomplished their dreams by winning 2016 championship.

Zambian drivers hold the record for winning the ARC title on twelve different occasions. Satwant Singh won it eight times, Muna Singh (2), Mohamed Essa and Jassi Muna Singh once respectively.

With the interest of winning the crown growing larger, more foreign drivers are expected to contest this year's Safari Rally, which has attracted over 51 entries. Kenya has six ARC-registered crews. According to Singh, it is not mandatory an option tackle selected events on either North or South Region. To be declared the ARC champion, one needs to participate in minimum of two events in the North (Rwanda, Uganda, Ivory Coast, Kenya) and two events in the south (South Africa, Zambia, Tanzania).

Those with expired homologated cars like the Classic cars have also been included in the list of those models, which can score points in the current series.

Singh said: "Classic cars are restricted only to two wheel front or rear drive. They will not be a threat to the top class machines vying for the overall victory: where expired homologated cars can and this wouldn't go well with FIA."



The 2017 Safari Rally. 17<sup>th</sup> & 18<sup>th</sup> March. ARC /KNRC Round 2

## Press Release 3

### REGISTERED CREWS FOR THE AFRICAN RALLY CHAMPIONSHIP 2017

<b>DRIVER</b>	<b>NAVIGATOR</b>	<b>COUNTRY</b>
1 LEROY GOMES	URSHLLA GOMES	ZAMBIA
2 JONATHAN SOMEN	RICHARD HECHLE	KENYA
3 DON SMITH	ROBERT KAUGI	KENYA
4 FITIDIS CHRISTAKIS	NZAMWITA ERIC MAXIME	UGANDA
5 YASIN M NASSER	ALI KATUMBA	UGANDA
6 RICHARD LEEKE	HENRY CARL KOHNE	SOUTH AFRICA
7 VALERY BUKERA	NITAL KHETIA	BURUNDI
8 KLEEVEN GOMES	ERIC SMALL	ZAMBIA
9 JASSY SINGH	SAJID KHAN	ZAMBIA
10 MUNA SINGH JNR	ZUNAID KHAN	ZAMBIA
11 HASSAN ALWI	LEROY ENOCH OWNGA	UGANDA
12 SSEMPSEMBWA ABDU		UGANDA
13 JASPREET S CHATTHE	GURMEET S PANESAR	KENYA
14 JEAN GAKWAYA	CLAUDE GAKWAYA	RWANDA
15 JAS MANGAT	KAMYA JOSEPH	UGANDA
16 DUNCAN MUBIRU	GEORGE SEMAKULA	UGANDA
17 MOHAMMED ROSHANALI	GINSEN JEAN-JEAN	BURUNDI
18 DHARAM PANDYA	AWADH BAFADHIL	TANZANIA
19 AHMED HUWEL		TANZANIA
20 RANDEEP SINGH		TANZANIA
21 TASH TUNDO	CHANTEL YOUNG	KENYA
22 MANVIR BARYAN	DREW STURROCK	KENYA
23 CARL TUNDO	TIMOTHY JESSOP	KENYA
24 FREDERIC RAKOTOMANGA	YACHINE ADAM	MADAGASCAR



The 2017 Safari Rally. 17<sup>th</sup> & 18<sup>th</sup> March. ARC /KNRC Round 2

By Abdul Sidi

## Press Release 4

Tapio Laukkanen, the defending Kenya National Drivers' Champion is already in the country in readiness for the 2017 Safari Rally.

The Finn, who was voted the Motorsportsman of the Year last year after clinching the overall standings of the 2016 Kenya National Rally Championship, is yet to win the Safari Rally after two attempts.

"I take each rally as it comes. There are no special plans for the Safari Rally though the aim is always to win every rally I enter. However winning the Safari Rally would be a bigger achievement considering Kenya has one of the best championships," said Laukkanen after arriving from Finland yesterday morning.

The driver to watch is the inform Manvir Baryan in the new Skoda Fabia. The car helped him secure his first ever career win by clinching victory in the Mombasa Rally, the opening round of the 2017 KNRC series.

Jassi Chatthe, the 2015 African Rally Champion is one of the hot favorites for an outright victory with a mind to also proceed with selected rounds of the current ARC series depending on his performance in the Safari Rally. Chatthe is also the former Safari Rally and Kenya National Champion,

Chatthe is one of the six local drivers to have registered for the 2017 ARC contest. The rest are Carl Tundo, Baryan, Tash Tundo, Jonathan Somen and Don Smith, who is the current ARC Champion. There are 13 foreign entries among the list of 50 entrants.

Reigning National Formula Two champion, Eric Bengi will now be at the wheels of a 4wd Subaru Impreza N10 instead of the usual 2wd Toyota RunX.

Raaji Bharij, who won the recent Classic Rally, is the top seeded Classic Class driver in a Ford Escort. Others include Geoff Bell of South Africa and Kenya's Rommy Bhamra in their respective Datsun 240Zs among others.

Tash Tundo is the top lady driver among the six female competitors in the list of entrants.

The two-day event will cross through five different Counties starting from Nairobi before touching Nakuru. The total competitive distance will be 200 kilometers.



## The 2017 Safari Rally. 17<sup>th</sup> & 18<sup>th</sup> March. ARC/KNRC Round

		2016 FAST FASTEST									
DRIVERS		1ST	2ND	3RD	4TH	5TH	6TH	7TH	8TH	9TH	10TH
1	Tapio Laukkanen	18	7	2	1	2	1	1	-	-	-
2	Ian Duncan	1	8	9	4	4	-	-	-	-	1
3	Baldev Chager	3	3	6	5	-	-	2	1	-	1
4	Jaspreet Chatthe	8	10	8	3	3	-	1	-	2	-
5	Carl Tundo	-	2	4	6	6	8	4	1	-	-
6	Manvir Baryan	2	5	3	1	6	4	3	1	-	1
7	Rajbir Rai	4	3	2	7	8	2	1	1	-	-
8	Onkar Rai	1	5	2	5	3	6	5	2	-	-
9	Tejveer Rai	-	-	-	-	-	5	2	4	1	-
10	Amaanraj Rai	-	-	-	-	-	2	1	3	2	4
11	Jasmeet Chana	-	-	-	-	-	-	2	2	8	3
12	Imran Mogul	-	-	-	-	1	2	3	4	2	1
13	Frank Tundo	-	-	-	-	-	-	1	2	4	2
14	Piero Canobbio	-	-	-	1	-	-	1	3	4	1
15	Farhaaz Khan	-	-	-	-	-	2	3	2	2	6
16	Izhar Mirza	-	-	-	-	-	-	1	2	-	2
18	Asad Khan	-	-	-	-	-	1	1	-	2	4
19	Stephen Mwangi	-	-	-	-	-	1	1	3	1	-
20	Mahesh Halai	-	1	-	-	1	-	-	-	2	6
21	John Ng'ang'a	-	-	-	-	-	-	1	2	2	-
22	Dilraj Chatthe	-	-	-	-	-	-	-	2	1	-
24	Jansher Sandhu	-	-	-	-	-	-	-	-	1	2
26	Eric Bengi	-	-	-	-	-	-	-	-	1	3
27	Natasha Tundo	-	-	-	-	-	-	1	-	-	1
32	Adil Mirza	-	-	-	-	-	-	-	-	1	-
33	Chandrakant Devji	-	-	-	-	-	-	-	-	-	1
37	Jas Mangat	1	-	-	1	2	-	-	-	-	-
38	Quentin Mitchell	-	-	-	1	3	1	1	-	1	-
42	Issa Amwari	-	-	-	-	-	-	1	1	-	-
44	Eric Njogu	-	-	-	-	-	1	-	4	-	-
45	Aakif Virani				1		1				1

# SPECTATOR SAFETY

The 2017 Safari Rally. 17th & 18th March. ARC/KNRC Round



Spectators are reminded that motorsport can be dangerous and, despite the organisers of the 2017 Safari Rally taking all reasonable precautions, unavoidable accidents can happen. In respect of these, you are present at your own risk.

Spectators must obey the instructions of rally marshals. Spectators who are asked to move and refuse to do so are putting their own safety and that of others at risk. Where this happens the stage may be stopped or cancelled.

Rally cars can do the unexpected, so expect the unexpected.

## Remember rally cars may:

- Run wide on corners
- Cut corners
- Throw up stones
- Overshoot junctions
- May leave the road

The event would not happen without the agreement of the residents, farmers and landowners who live on the roads which have been closed. So, please follow the Countryside Code at all times and respect other people's property and take all litter home with you.

The organisers of the 2017 Safari Rally have put various measures in place in an attempt to keep spectators safe but ultimately all spectators are responsible for their own personal safety.

## For your own safety and the safety of others:

- listen to the marshals and follow their instructions. They are there to help you and ensure the Rally runs within the safety guidelines prescribed by the FIA.
- Be aware that marshals and officials have the right to work without being abused or threatened
- Arrive in plenty of time
- Watch from a safe location, preferably on high ground
- Observe and obey all event signage
- Do not walk on the stage
- Do not enter prohibited areas
- Ensure that children and infants are always accompanied by an adequate number of adults who are responsible for their behaviour and safety
- Remain alert
- Park your car in such a position that it does not block the road - remember emergency vehicles might have to leave or access the stage by that road

Have fun but keep safe!

